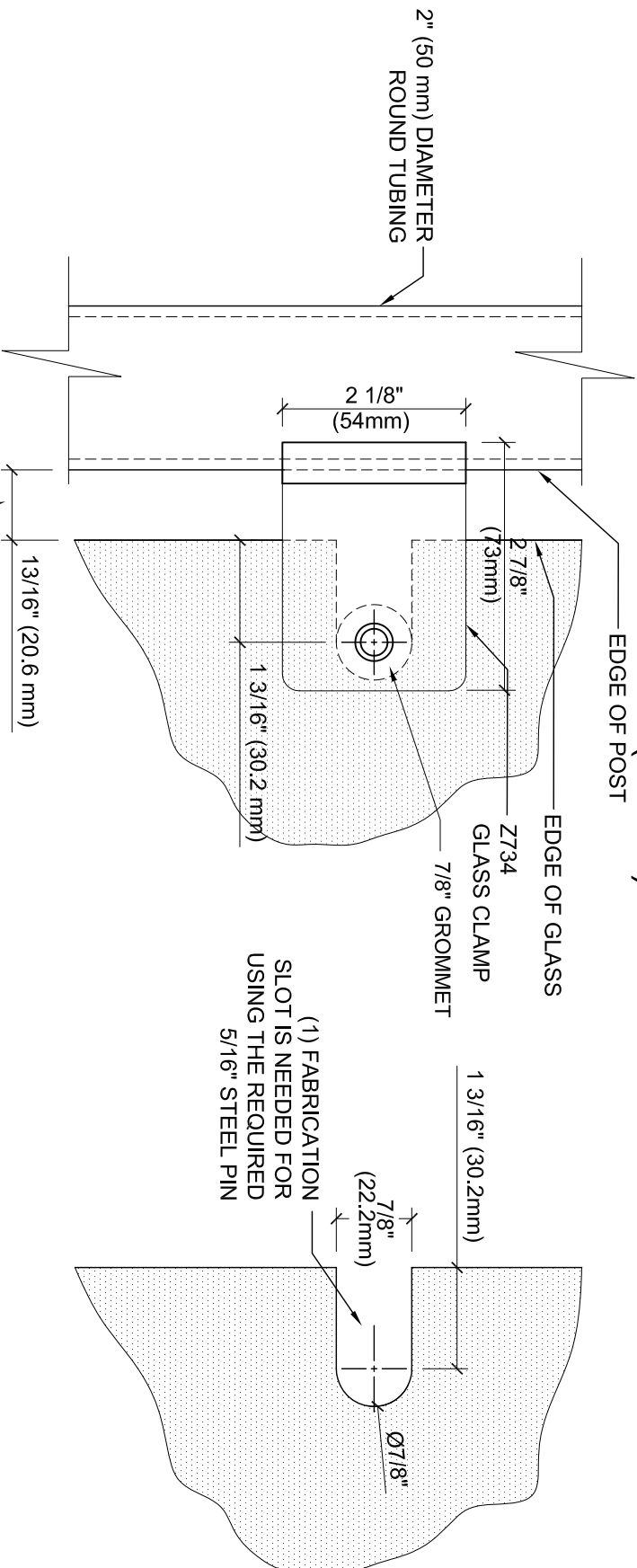


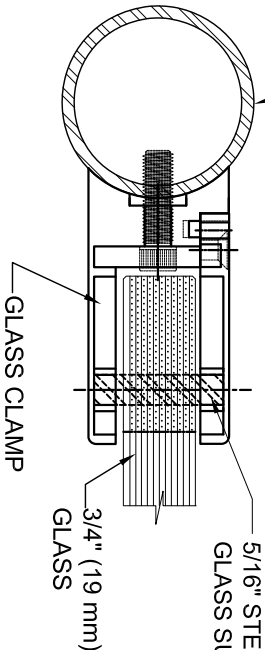
GLASS FABRICATION TEMPLATE FOR THE Z-SERIES SQUARE TYPE RADIUS BASE CLAMPS FOR 3/4" (19 mm) GLASS



2" (50 mm) DIAMETER
ROUND TUBING

**GLASS FABRICATION
TEMPLATE USED FOR:**

CATALOG NUMBER	TUBE DIA
Z734BS	2" (50.8 mm)
Z734PS	2" (50.8 mm)



ALWAYS USE DIMENSIONS SHOWN ON THE PLAN.
DO NOT SCALE OR DIMENSION ACTUAL DRAWING
TO ENSURE ACCURACY

SPECIFICATIONS:

- GLASS THICKNESS: MODELS FOR 3/4" (19 mm) GLASS.
- BASE DESIGN: RADIUS BACK
- FOR USE WITH: 1.9" AND 2" (48.3mm and 50.8mm) DIAMETER ROUND TUBING ONLY.
- MATERIAL: 316 STAINLESS STEEL BRUSHED AND POLISHED FINISHES
- GLASS FABRICATION: FOR 3/4" (19 mm) THICK GLASS. 7/8" (22mm) DIAMETER FINGER SLOT NEEDED FOR USING REQUIRED STEEL PIN FOR GLASS SUPPORT.
- INCLUDES: RUBBER GASKETS AND REQUIRED STEEL PIN WITH GROMMET.

DESCRIPTION: Z-SERIES SQUARE TYPE RADIUS BASE GLASS CLAMP FOR 3/4" (19 mm) THICK GLASS	CAT. NO.: (SEE CHART) FILE NAME: Z734-Gls Fab DRAWN BY: R.D. CHECKED BY: C.H.
DATE: 09/16/11	SCALE: 1/2"=1'-0"
SHT 1	OF 1